

Quality ID #250 (NQF 1853): Radical Prostatectomy Pathology Reporting – National Quality Strategy
Domain: Effective Clinical Care

2018 OPTIONS FOR INDIVIDUAL MEASURES:
CLAIMS ONLY

MEASURE TYPE:
Process

DESCRIPTION:
Percentage of radical prostatectomy pathology reports that include the pT category, the pN category, the Gleason score and a statement about margin status

INSTRUCTIONS:
This measure is to be submitted **each time** a radical prostatectomy surgical pathology examination is performed during the performance period for prostate patients. Each unique CPT Category I code or quality-data code submitted on the claim will be counted for denominator inclusion. It is anticipated that eligible clinicians who examine prostate tissue specimens following resection in a laboratory or institution will submit this measure. If the specimen is not primary prostate tissue (e.g., breast, lung), submit only G8798.

Measure Submission:
The listed denominator criteria is used to identify the intended patient population. The numerator quality-data codes included in this specification are used to submit the quality actions allowed by the measure. All measure-specific coding should be submitted on the claim(s) representing the eligible encounter.

DENOMINATOR:
All radical prostatectomy surgical pathology examinations performed during the measurement period for prostate cancer patients

Denominator Criteria (Eligible Cases):
Diagnosis for malignant neoplasm of prostate (ICD-10-CM): C61
AND
Patient procedure during the performance period (CPT): 88309

NUMERATOR:
Radical Prostatectomy reports that include the pT category, the pN category, Gleason score and a statement about margin status

Numerator Quality-Data Coding Options:
If Patient is not Eligible for this Measure because the Specimen is not Primary Prostate Tissue from a Radical Resection Report:
Denominator Exclusion: G8798: Specimen site other than anatomic location of prostate

OR

Radical Prostatectomy Report includes pT category, pN category, Gleason Score and Statement about Margin Status
Performance Met: CPT II 3267F: Pathology report includes pT category, pN category, Gleason score and statement about margin status

OR

pT category, pN category, Gleason Score and Statement about Margin Status not Documented for Medical Reasons
Append a modifier (1P) to Category II code 3267F to submit documented circumstances that appropriately exclude patients from the denominator.

Denominator Exception: 3267F with 1P:

Documentation of medical reason(s) for not including pT category, pN category, Gleason score and statement about margin status in the pathology report (e.g., specimen originated from other malignant neoplasms, transurethral resections of the prostate (TURP), or secondary site prostatic carcinomas)

OR

pT category, pN category, Gleason Score and Statement about Margin Status not Documented, Reason not Otherwise Specified

Append a submitting modifier (8P) to CPT Category II code 3267F to submit circumstances when the action described in the numerator is not performed and the reason is not otherwise specified.

Performance Not Met: 3267F with 8P:

pT category, pN category, Gleason score and statement about margin status were not documented in pathology report, reason not otherwise specified

RATIONALE:

Therapeutic decisions for prostate cancer management are stage driven and cannot be made without a complete set of pathology descriptors. Incomplete pathology reports for prostate cancer may result in misclassification of patients, rework and delays, and suboptimal management. The College of American Pathologists Cancer Committee has produced an evidence-based protocol/checklist of essential pathologic parameters that are recommended to be included in prostate cancer resection pathology reports. Conformance of pathology reports with the CAP checklist is a requirement for Cancer Center certification by the ACS.

The protocol recommends the use of the TNM Staging System for carcinoma of the prostate of the American Joint Committee on Cancer (AJCC) and the International Union Against Cancer (UICC). The radical prostatectomy checklist also includes extraprostatic extension.

In a study of cancer recurrence following radical prostatectomy, it was noted that "The relatively high proportion of patients who have biopsy-proven local recurrence who have organ-confined disease is probably inaccurate and, in large part, reflects under sampling and under recognition of extraprostatic extension".

The CAP Q probes data (2006) indicates that 11.6% of prostate pathology reports had missing elements. Extent of invasion (pTNM) was most frequently missing (52.1% of the reports missing elements), and extraprostatic extension was the second most frequently missing (41.7% of the reports missing elements). Margin status was missing in 8.3% of reports.

A sampling from prostate cancer cases in 2000 through 2001 from the College of Surgeons National Cancer Data Base found only 48.2% of surgical pathology reports for prostate cancer documented pathologic stage similar to the more recent data from the CAP Q probes study. The NCDB data showed the Gleason score was present 86.3% of the time, slightly less than the 100% compliance found in the CAP Q probes study and that margin status was present in 84.9% of reports.

CLINICAL RECOMMENDATION STATEMENTS:

Patient management and treatment guidelines promote an organized approach to providing quality care. The (American College of Surgeons Committee on Cancer) CoC requires that 90% of pathology reports that include a cancer diagnosis contain the scientifically validated data elements outlined in the surgical case summary checklist of the College of American Pathologists (CAP) publication Reporting on Cancer Specimens. The College regards the reporting elements in the "Surgical Pathology Cancer Case Summary (Checklist)" portion of the protocols as essential elements of the pathology report. However, the manner in which these elements are reported is at the discretion of each specific pathologist, taking into account clinician preferences, institutional policies, and individual practice.

Pathologic staging is usually performed after surgical resection of the primary tumor. Pathologic staging depends on pathologic documentation of the anatomic extent of disease, whether or not the primary tumor has been completely removed.

[CAP June 2017 Protocol for the Examination of Specimens From Patients With Carcinoma of the Prostate Gland](#)

COPYRIGHT:

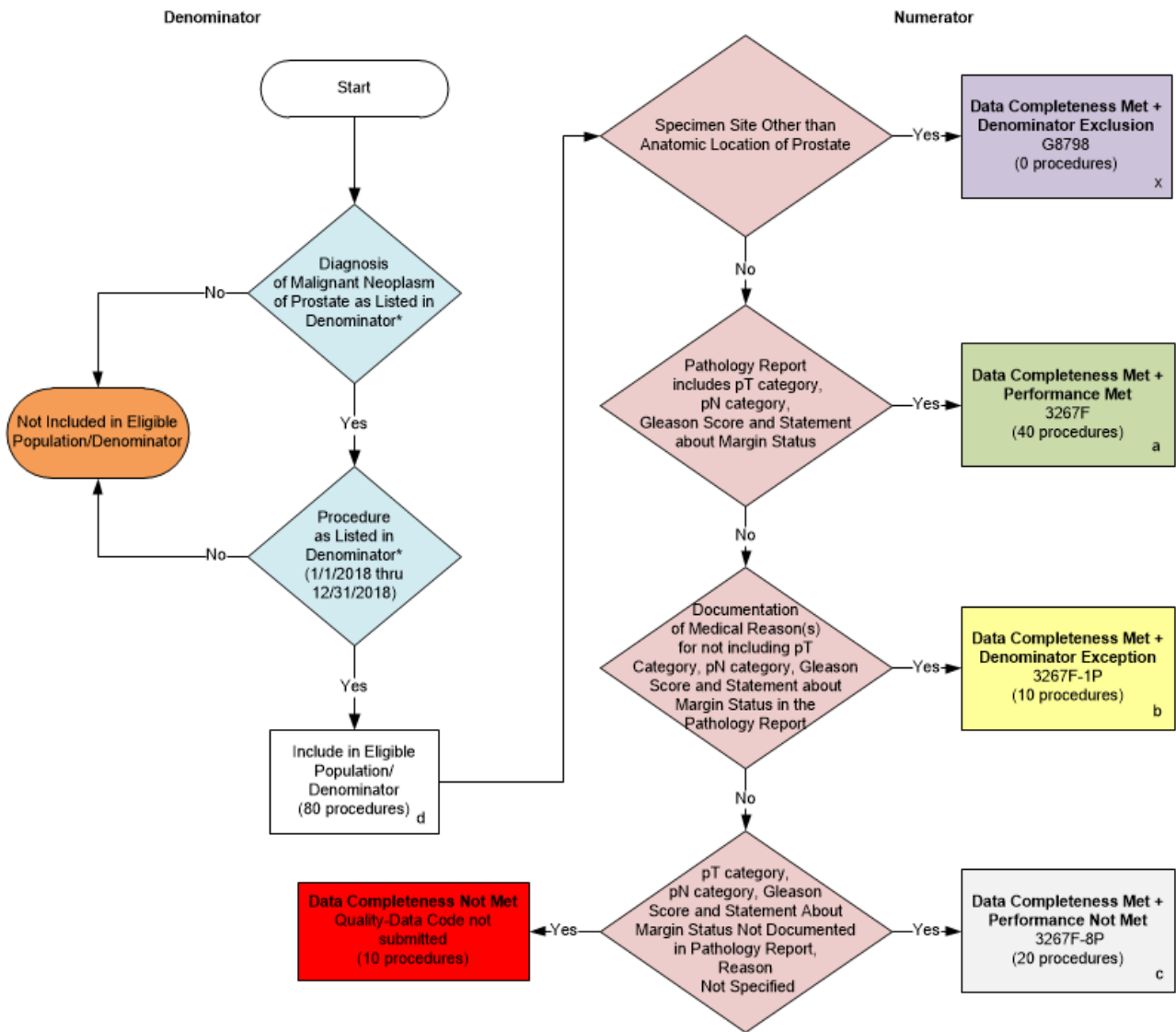
THE SPECIFICATIONS ARE PROVIDED "AS IS" WITHOUT WARRANTY OF ANY KIND.

© 2007 and 2012 College of American Pathologists. All Rights Reserved.

Limited proprietary coding is contained in the Measure specifications for convenience. Users of the proprietary code sets should obtain all necessary licenses from the owners of these code sets. The College of American Pathologists disclaims all liability for use or accuracy of any Current Procedural Terminology (CPT®) or other coding contained in the specifications.

CPT® contained in the Measures specifications is copyright 2004-2017 American Medical Association.

2018 Claims Flow for Quality ID #250 NQF #1853: Radical Prostatectomy Pathology Reporting



SAMPLE CALCULATIONS:

Data Completeness=

$$\frac{\text{Denominator Exclusion (x=0 procedures)} + \text{Perf. Met (a=40 procedures)} + \text{Denominator Exception (b=10 procedures)} + \text{Perf. Not Met (c=20 procedures)}}{\text{Eligible Population / Denominator (d=80 procedures)}} = \frac{70 \text{ procedures}}{80 \text{ procedures}} = 87.50\%$$

Performance Rate=

$$\frac{\text{Perf. Met (a=40 procedures)}}{\text{Data Completeness Numerator (70 procedures) - Denominator Exclusion (x=0 procedures) - Denominator Exception (b=10 procedures)}} = \frac{40 \text{ procedures}}{60 \text{ procedures}} = 66.67\%$$

*See the posted Measure Specification for specific coding and instructions to submit this measure.
 NOTE: Submission Frequency - Procedure

CPT only copyright 2017 American Medical Association. All rights reserved. The measure diagrams were developed by CMS as a supplemental resource to be used in conjunction with the measure specifications. They should not be used alone or as a substitution for the measure specification.

2018 Claims Flow for Quality ID
#250 NQF #1853: Radical Prostatectomy Pathology Reporting

Please refer to the specific section of the specification to identify the denominator and numerator information for use in submitting this Individual Specification. This flow is for claims data submission.

1. Start with Denominator
2. Check Patient Diagnosis:
 - a. If Diagnosis of Malignant Neoplasm of Prostate as Listed in the Denominator equals No, do not include in Eligible Patient Population. Stop Processing.
 - b. If Diagnosis of Malignant Neoplasm of Prostate as Listed in the Denominator equals Yes, proceed to check Procedure Performed.
3. Check Procedure Performed:
 - a. If Procedure as Listed in the Denominator equals No, do not include in Eligible Patient Population. Stop Processing.
 - b. If Procedure as Listed in the Denominator equals Yes, include in the Eligible Population.
4. Denominator Population:
 - a. Denominator population is all Eligible Procedures in the denominator. Denominator is represented as Denominator in the Sample Calculation listed at the end of this document. Letter d equals 80 procedures in the Sample Calculation.
5. Start Numerator
6. Specimen Site other than Anatomic Prostate:
 - a. If Specimen Site Other than Anatomic Location of Prostate equals Yes, include in Data Completeness Met and Performance Exclusion.
 - b. Data Completeness Met and Performance Exclusion letter is represented in the Data Completeness and Performance Rate in the Sample Calculation listed at the end of this document. Letter x equals 0 procedures in the Sample Calculation.
 - c. If Specimen Site Other than Anatomic Location of Prostate equals No, proceed to Pathology Report includes pT category, pN category, Gleason Score and Statement about Margin Status.
7. Pathology Report includes pT category, pN category, Gleason Score and Statement about Margin Status:
 - a. If Pathology Report includes pT category, pN category, Gleason Score and Statement about Margin Status equals Yes, include in Data Completeness Met and Performance Met.
 - b. Data Completeness Met and Performance Met letter is represented in the Data Completeness and Performance Rate in the Sample Calculation listed at the end of this document. Letter a equals 40 procedures in Sample Calculation.
 - c. If Pathology Report includes pT category, pN category, Gleason Score and Statement about Margin Status equals No, proceed to Documentation of Medical Reason(s) for not including pT Category, pN category, Gleason Score and Statement about Margin Status in the Pathology Report.

8. Check Documentation of Medical Reason(s) for not including pT Category, pN category, Gleason Score and Statement about Margin Status in the Pathology Report:
 - a. If Documentation of Medical Reason(s) for not including pT Category, pN category, Gleason Score and Statement about Margin Status in the Pathology Report equals Yes, include in Data Completeness Met and Denominator Exception.
 - b. Data Completeness Met and Denominator Exception letter is represented in the Data Completeness and Performance Rate in the Sample Calculation listed at the end of this document. Letter b equals 10 procedures in the Sample Calculation.
 - c. If Documentation of Medical Reason(s) for not including pT Category, pN category, Gleason Score and Statement about Margin Status in the Pathology Report equals No, proceed to pT category, pN category, Gleason Score and Statement About Margin Status Not Documented in Pathology Report, Reason Not Specified.
9. Check pT category, pN category, Gleason Score and Statement About Margin Status Not Documented in Pathology Report, Reason Not Specified:
 - a. If pT category, pN category, Gleason Score and Statement About Margin Status Not Documented in Pathology Report, Reason Not Specified equals Yes, include in the Data Completeness Met and Performance Not Met.
 - b. Data Completeness Met and Performance Not Met letter is represented in the Data Completeness in the Sample Calculation listed at the end of this document. Letter c equals 20 procedures in the Sample Calculation.
 - c. If pT category, pN category, Gleason Score and Statement About Margin Status Not Documented in Pathology Report, Reason Not Specified equals No, proceed to Data Completeness Not Met.
10. Check Data Completeness Not Met
 - a. If Data Completeness Not Met equals No, Quality Data Code not submitted. 10 procedures have been subtracted from Data Completeness Numerator in the Sample Calculation.

SAMPLE CALCULATIONS:

Data Completeness=

$$\frac{\text{Denominator Exclusion (x=0 procedures)} + \text{Perf. Met (a=40 procedures)} + \text{Denominator Exception (b=10 procedures)} + \text{Perf. Not Met (c=20 procedures)}}{\text{Eligible Population / Denominator (d=80 procedures)}} = \frac{70 \text{ procedures}}{80 \text{ procedures}} = 87.50\%$$

Performance Rate=

$$\frac{\text{Perf. Met (a=40 procedures)}}{\text{Data Completeness Numerator (70 procedures) - Denominator Exclusion (x=0 procedures) - Denominator Exception (b=10 procedures)}} = \frac{40 \text{ procedures}}{60 \text{ procedures}} = 66.67\%$$