



## Update on Sinonasal and Salivary Gland Lesions

**Jennifer L. Hunt, M.D., M.Ed.**  
Section Head, Surgical Pathology  
Director, Head and Neck and Endocrine Pathology  
Director, Molecular Anatomic Pathology Unit

---

---

---

---

---

---

---

---

## Salivary Gland Lesions

- **Inflammatory**
  - Necrotizing sialometaplasia
  - Warthin's tumor
- **Benign neoplastic**
  - Pleomorphic adenoma
  - Basal cell adenoma
  - Myoepithelioma



Title of Talk | Month 2007 | 2

---

---

---

---

---

---

---

---

## Salivary Gland Lesions

- **Malignant**
  - Mucoepidermoid carcinoma
  - Adenoid cystic carcinoma
  - Epithelial-myoepithelial carcinoma
  - Salivary duct adenocarcinoma
  - Carcinoma ex pleomorphic adenoma
  - Acinic cell carcinoma



Title of Talk | Month 2007 | 3

---

---

---

---

---

---

---

---

## Salivary Glands Background

- Major salivary glands
  - Parotid
  - Submandibular gland
  - Sublingual gland
- Minor salivary glands
  - Throughout respiratory tract

---

---

---

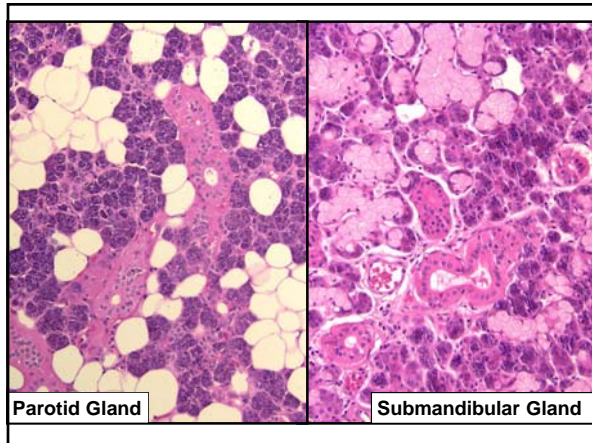
---

---

---

---

---



---

---

---

---

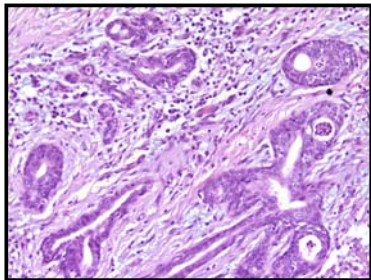
---

---

---

---

## Necrotizing Sialometaplasia



---

---

---

---

---

---

---

---