



ASCP
BOARD OF
CERTIFICATION

CMP

INTERNATIONAL CERTIFICATION
MAINTENANCE PROGRAM

International Medical
Laboratory Technician

International Medical
Technologist

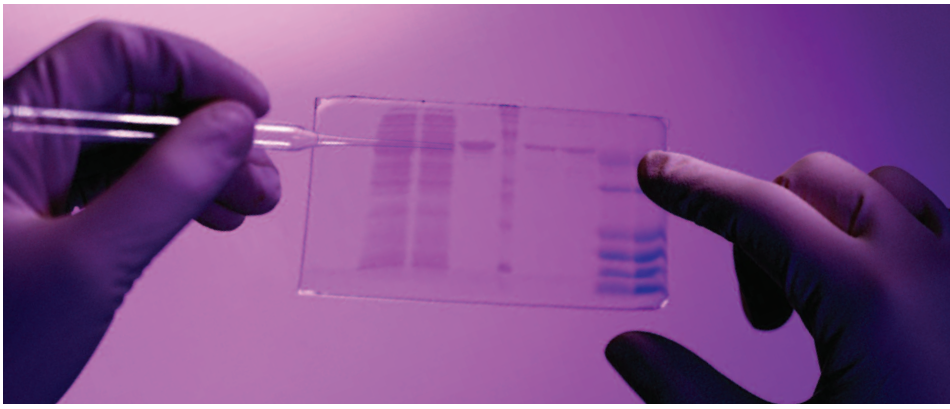
International Phlebotomy
Technician

International Technologist in
Gynecologic Cytology

International Technologist in
Molecular Biology

Tecnólogo Médico
Internacional en español





The ASCP Board of Certification (BOC) developed the Certification Maintenance Program (CMP) to demonstrate to the public that laboratory professionals with this designation are performing activities to stay current in their profession.

The CMP provides an opportunity for you to complete a wide variety of learning experiences that demonstrate your professional competency and dedication to excellence in the workplace. The CMP will help you stay current in new developments in your field and provide opportunities for both professional and personal growth. **(For additional information, please refer to the BOC CMP Web site (www.ascp.org/cmp)).**

How the program works: Individuals complete any combination of the activities on the following page, earning points for these activities. The number of points required over a three-year period, are shown below based on your certification. Individuals who successfully complete the CMP will receive a certificate valid for three years and be assigned the designation “CM” in superscript after their certification designation [MT(ASCP)^{CM}]. The goal of this program is to demonstrate to the public that laboratory professionals with this designation are performing activities to stay current in their practice.

INTERNATIONAL CMP REQUIREMENTS

Certification Category	CMP required for individuals certified beginning in the year indicated	Total Number of Points Required	Points Distribution*
International MT, MLT	2012	36	<ul style="list-style-type: none"> • 1 point in laboratory or patient safety • 2 points in each of the following: blood banking, chemistry, hematology, microbiology • Remaining points in area(s) of lab specialty, immunology, molecular diagnostics, management, education or other related laboratory areas of interest
International MB, CTgyn	2012	36	<ul style="list-style-type: none"> • 1 point in laboratory or patient safety • 2 points in area of specialty • Remaining points in area of specialty, management, education or other related laboratory areas of interest
International PBT	2012	9	<ul style="list-style-type: none"> • 1 point in laboratory or patient safety • 2 points in phlebotomy • Remaining points in area of phlebotomy, management, education or other related areas of interest

* It is the responsibility of the certificant to assign all CMP points to the required areas for recertification.

For MT & MLT

Minimum of 36 points to include: 2 points minimum required in each domain (blood banking, chemistry, hematology, microbiology), 1 point minimum in laboratory or patient safety and remaining points in area(s) of laboratory specialty, immunology, molecular diagnostics, management, education, and/or other related laboratory areas of interest.

For MB, CTgyn

Minimum of 36 points to include: 1 point minimum in laboratory or patient safety, 2 points minimum in the area of specialty, and the remaining points in the specialty, management, education, and/or other related areas of interest.

For PBT

Minimum of 9 points, 1 point minimum in laboratory or patient safety, 2 points in phlebotomy, and remaining points in phlebotomy, management, education and/or other related areas of interest.

INTERNATIONAL CMP POINT ALLOCATION

Activities*	Contact/Credit Hours	CMP Points
1. Formal continuing education course: **ACCME, ASCP, CMLE AACC, professional societies (including state, regional and ACCENT, ASCLS PACE, CE programs sponsored by other local societies and chapters, universities and colleges or continuing education courses sponsored by national or international professional societies	1 contact hour (50-60 minutes)	1
2. Employer-offered courses (in-service, instrument training, vendor-sponsored, etc.)	1 contact hour (50-60 minutes)	1
3. College/university coursework (biological/chemical/medical science, computer management, education or any other science related courses) courses must be lab related, management related or in the education department.	15 contact hours	15 (each contact hour is equal to 1 point)
4. Teleconference, subscription or online self-instructional courses for which ACCME, CMLE, ACCENT, PACE or other local/international professional society credits are awarded	1 contact hour (50-60 minutes)	1
5. Completion of advanced BOC certification: U.S. Specialist/Diplomate certification Categorical or higher level certification		25 12 12
6. Employer assessment (must use ASCP/BOC Employer Assessment Form)		2 (per year/max 4 pts.)
7. Presentation or workshop (first time only)	each contact hour of presentation (50-60 minutes)	3
8. Authoring journal articles for peer-reviewed publications		5
9. Authoring a book related to the laboratory profession (over 300 pages) (under 300 pages) (chapter in a book)		21 14 7
10. Editing a book related to the laboratory profession		5
11. Doctoral dissertation		10
12. Master's thesis		4
13. Presenting posters/exhibits		3
14. Serving on committees/boards related to the profession (national, state, regional, local)		2 (per year)
15. Serving on a BOC Advisory Board		2 (per year)
16. Role of on-site inspector/paper reviewer for laboratory accreditation (CAP, The Joint Commission, AABB, COLA, state/government agency, WHO, ISO, SANAS, UKAS and other international accrediting bodies who are full members of ILAC)		2 (per year)

* Activities must be related to area of specialty and safety as indicated. **ACCME (Accreditation Council for Continuing Medical Education), ASCP CMLE (American Society for Clinical Pathology-Continuing Medical Laboratory Education), AACC ACCENT (American Association for Clinical Chemistry-ACCENT programs), ASCLS PACE (American Society of Clinical Laboratory Science-PACE programs)

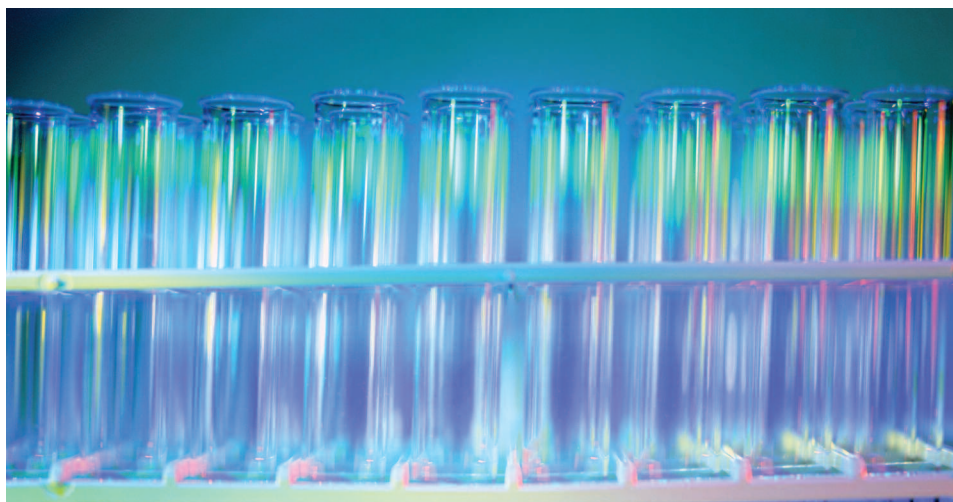
PLEASE NOTE: Because of the large volume of continuing education programs available, the Board of Certification will not respond to requests for approval of individual programs. If the program meets the criteria as described above, it will be accepted for CMP points. Program provider must assign points or contact hours.

Audit Procedure

The ASCP Board of Certification will review and audit a percentage of declaration forms each year. If you are selected for audit, you will be notified by mail or e-mail and requested to submit documentation of all activities submitted for the program.

Failure to Participate in CMP

If you were certified on or after January 1, 2012, and do not participate in the CMP, your certification will no longer be valid after the three year time period printed on the certificate and you will no longer be permitted to use the (ASCP)^{CM} certification designation after your name.



COMPLETING INTERNATIONAL CMP – STEP BY STEP

Step 1

Review the International CMP information brochure/booklet. (To view the online CMP booklet, please go to www.ascp.org/cmp)

Step 2

Complete the continuing competence activities that are required for your certification category and save documents verifying that you completed these activities during the three-year period following certification/recertification.

Step 3

One month before the ending validation date on your certificate, complete the online CMP Declaration Form with the fee paid by credit card or complete and sign the CMP Declaration Form (PDF copy) and mail to the ASCP Board of Certification with a check or money order.

DO NOT INCLUDE any documentation of your continuing competence activities with your Declaration Form. This documentation will only be required if your Declaration Form is selected for auditing purposes

Step 4

If you receive notification that your Declaration Form is being audited, email or mail copies of your certificates of completion and any other documentation at that time.

Step 5

Upon successful completion of the program, you will receive a new certificate valid for three years. The designation “CM”, as a superscript, is required after your initials to indicate that you have successfully maintained your certification [e.g. MT(ASCP)^{CM}]

Change of Name/Address: If you have an address or name change, please notify the ASCP Board of Certification office by email to www.ascp.org/bocfeedback or fax 312.541-4845. Name changes must be accompanied by a photo copy of your marriage license or court order.

Expired Certification: If your certification has expired, please submit your completed and signed declaration form with the current CMP fee and reinstatement fee.



ASCP Board of Certification
33 W Monroe St, Suite 1600
Chicago, IL 60603
Phone: 800.267.2727

Fax: 312.541.4845
Email: www.ascp.org/bocfeedback